

UNIT
1

Key, Scales, and Modes

Major Scales

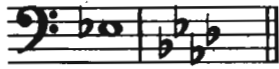
1. Given: pitch and scale degree. Write the complete major scale.

SAMPLE

NAME _____

2. Given: note and name of major-scale degree. Write the correct key signature in the space to the right of the note.

SAMPLE



dominant



tonic submediant leading tone submediant leading tone



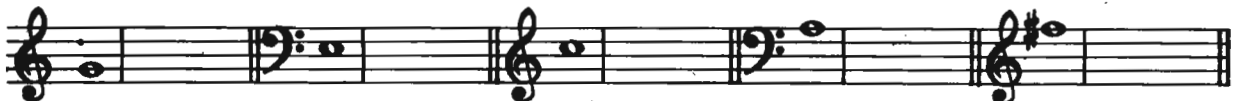
dominant submediant mediant leading tone mediant



supertonic mediant leading tone dominant leading tone



subdominant supertonic submediant dominant mediant



tonic leading tone subdominant supertonic submediant

Minor Scales

1. Given: pitch and minor-scale degree. Write the complete minor scale specified by these abbreviations: N—natural; H—harmonic; MA—melodic ascending.

SAMPLE

4̂ (MA) 6̂ (N)

1̂ (H) 2̂ (MA)

3̂ (N) 5̂ (H)

3̂ (H) 6̂ (N)

1̂ (MA) 2̂ (H)

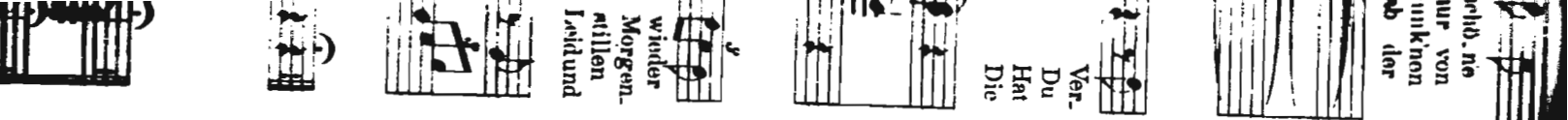
7̂ (H) 3̂ (MA)

2̂ (N) 7̂ (H)

6̂ (H) 4̂ (MA)

2̂ (N) 1̂ (H)

NAME _____



1

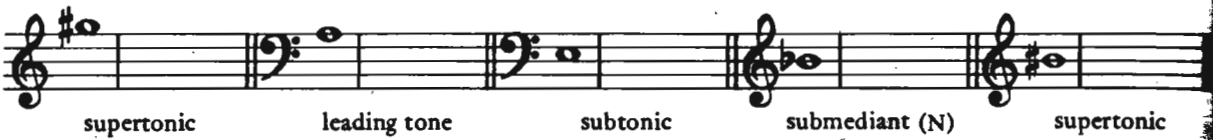
8

2. Given: note and name of minor-scale degree. Write the correct key signature in the space to the right of the note.

SAMPLE



submediant (MA)



Construction and Identification 1

1. Write intervals above the given notes. Then name the inversions of these intervals.

A musical staff in treble clef with a key signature of one flat (B-flat). The notes are: B-flat (4th line), C (4th space), D (5th line), E-flat (4th space), F (4th line), G (3rd space), A (3rd space), B-flat (2nd space), C (2nd space), D (2nd line), E-flat (1st space), F (1st line), G (1st space). The intervals between adjacent notes are labeled as follows: m3, M6, d7, m2, P5, A4, P8, A6, m6, P4.

inversions

A musical staff in bass clef with a key signature of one flat (B-flat). The notes are: B-flat (4th line), C (4th space), D (5th line), E-flat (4th space), F (4th line), G (3rd space), A (3rd space), B-flat (2nd space), C (2nd space), D (2nd line), E-flat (1st space), F (1st line), G (1st space). The intervals between adjacent notes are labeled as follows: M7, d3, d5, A5, M10, A2, m3, M3, m7, A3.

inversions

2. Identify these intervals.

A musical staff in treble clef with a key signature of one flat (B-flat). The intervals shown are: B-flat (4th line) to C (4th space), C (4th space) to D (5th line), D (5th line) to E-flat (4th space), E-flat (4th space) to F (4th line), F (4th line) to G (3rd space), G (3rd space) to A (3rd space), A (3rd space) to B-flat (2nd space), B-flat (2nd space) to C (2nd space), C (2nd space) to D (2nd line), D (2nd line) to E-flat (1st space), E-flat (1st space) to F (1st line), F (1st line) to G (1st space).

3. Write intervals below the given notes. Then name the inversions of these intervals.

m7 M3 d5 m6 P8 d3 M2 P4 M10 A6

4. Identify these intervals.

schied, nie
 nur von
 rinken
 ab der
 Ver.
 Du
 Hat
 Die
 wieder
 Morgen,
 stillen
 Leid und